

Linn County Community Empowerment

Counties in Area: Linn County

Contact for Area: Chris Kivett-Berry, Project Director
520 11th Street NW
Cedar Rapids, Iowa 52404
Phone: 319-892-5721
Fax: 319- 892-5719
E-mail: chris.kivett-berry@linncounty.org
Website: linncountycommunityempowerment.org



Vision: *Every child will have access to quality services empowering them to be healthy and successful.*

Mission: *To provide and support quality education, health and human services through community partnerships and collaborations, for children prenatal age-5 and their families, resulting in healthy, safe and school ready children.*

Local Story

“It has been a very rough year for our family. We were displaced by the flood and have been struggling ever since. When the fliers came out about a free parenting class we could not wait for it to start. Our teacher Mary was great. She answered all of our questions and never made us feel bad about our parenting skills. I also cannot say enough about how wonderful it was to have a meal with my family and then do a family activity at class. These days it’s hard to find the time for normal family activities. I am so thankful to have had this opportunity and am grateful that this type of class is available in our community. It has helped my family tremendously and brought some structure and routine in this time of uncertainty. Thank you!!”

Submitted by a parent attending a Parent Education Consortium class.

Did you know?

- **90%** Of Brain Development Occurs Before Children Enter Kindergarten. (D. Purves, Body & Brain, Harvard University Press, 1988).
- **77%** of Iowa families with children under age 5 have both or the only parent working. (US Census, 2000).

Why are the programs we support important to reaching our vision and mission?

- The data on brain development and the % of parents in the work place supports the need for high quality child care, family support services, child health care and parent education opportunities for all.

Linn County Community Plan Priorities

- Preventive Health
- Mental Health & Behavioral Supports
- Affordable High Quality Early Care & Education
- Child & Family Support
- Community Where Children Are Valued

Types Of Services Supported by Linn County Community Empowerment (28 funded programs)

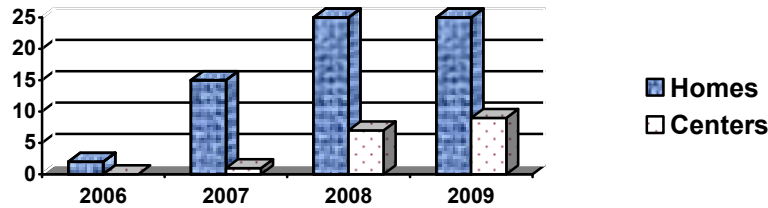
- Child Health Services & hawk-I outreach
- Professional Development for Caregivers/Parents
- Family Support Services: In-Home & Group
- Part & Full Day Preschool Tuition
- Full-day Wraparound Care
- Prenatal Drug Exposure Case Management
- Child Care Home & Center Consultants
- NAFCC, QRS, IQPPS and NAEYC Support
- Transportation
- Flood Recovery Support
- Group Parenting Classes
- Child Mental Health& Behavioral Supports
- Early Childhood Collaborations
- Empowerment Service Coordination
- Science Curriculum Training
- Child Care Nurse Consultant
- Marketing and Advocacy
- Oral Health Screens & Treatment

Linn County Community Wide Indicator

The data on brain development and the percentage of parents in the work place highlights the need for high quality child care. Child care providers can demonstrate quality by their participation in Local, State and National quality assessment programs.

Iowa Quality Rating System July 1, 2005 the State of Iowa passed legislation to implement a state-wide voluntary Quality Rating System (QRS) for child care providers using a ranking of 1- 5. The graph below illustrates the participation of Linn County providers in the State system.

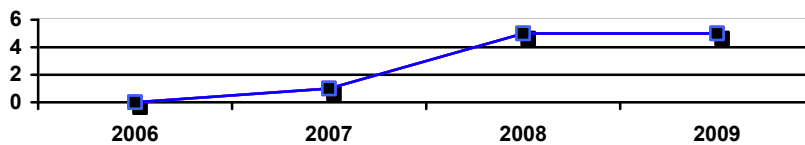
of Linn County Participants in Iowa QRS



Participation in the Iowa Quality Rating System has increased annually in Linn County. Home care providers currently comprise the majority of QRS participants.

National Accreditation of Family Child Care Home Care Providers can apply to receive National Accreditation of Family Child Care Homes (NAFCC), which signifies the program meets the highest standards for care of young children. The graph below shows the trend in Linn County.

of Linn County Home Providers with National Accreditation



Just 3 years ago, in 2006, no child care homes in Linn County had earned the National Accreditation of Family Child Care. By June 2009 the number of homes jumped to five (5) which accounted for 23% of all NAFCC homes in the State of Iowa and a 500% increase in Linn County.

Linn County Empowerment-Funded Program Data

Quality Early Childhood Environments The Linn County Empowerment QECE Program conducts Pre-Post assessments on child care centers and provides consultation and equipment grants to address areas in need of improvement. A review of FY09 data indicates that the **100%** of the classrooms assessed received a higher rating on all 6 area of their Post evaluation. The overall **quality of care in the Infant and Toddler Rooms increased 18%** and the overall **quality of care in the 3-5 yr old rooms increased 17.2%**

Others in Linn County That Help to Support Quality Child Care: Linn County Empowerment has a strong partnership with our local United Way, which co-funds the QECE project highlighted above.

What can you do to help? Inquire at your child's care provider if they participate in a Local, State or National quality assessment program and be sure to acknowledge those that do. If your provider is interested in participating in a quality assessment program please have them call their local Empowerment contact.

Iowa Community Empowerment

**Annual Report, State Fiscal Year 2009
July 1, 2008 through June 30, 2009**

Date Report Approved By Local CEA Board: **August 25, 2009**
Name of Community Empowerment Area: **Linn County Community Empowerment**
Counties/Area Served: **Linn County**
Website: www.linncountycommunityempowerment.org

Current Board Chairperson: **Dave Loy**

Current Fiscal Agent: **John Brandt, Linn Co. Community Services**

Signature: _____

Signature: _____

Address: 1700 B Avenue NE, Ste 203
Cedar Rapids, IA 52402
E-mail: dloy@psfcr.com

Address: 930 First Street SW
Cedar Rapids, IA 52404
E-mail: john.brandt@linncounty.org
Federal ID Number: 42-6004338

Contact Person for the Community Empowerment Area: **Chris Kivett-Berry**
Address: 520 11th Street NW
Cedar Rapids Iowa 52405
Phone: 319-892-5721
FAX: 319-892-5719
E-mail: chris.kivett-berry@linncounty.org

SECTION I – Board & Organizational Structure

Current Community Empowerment Board Composition on September 15, 2009

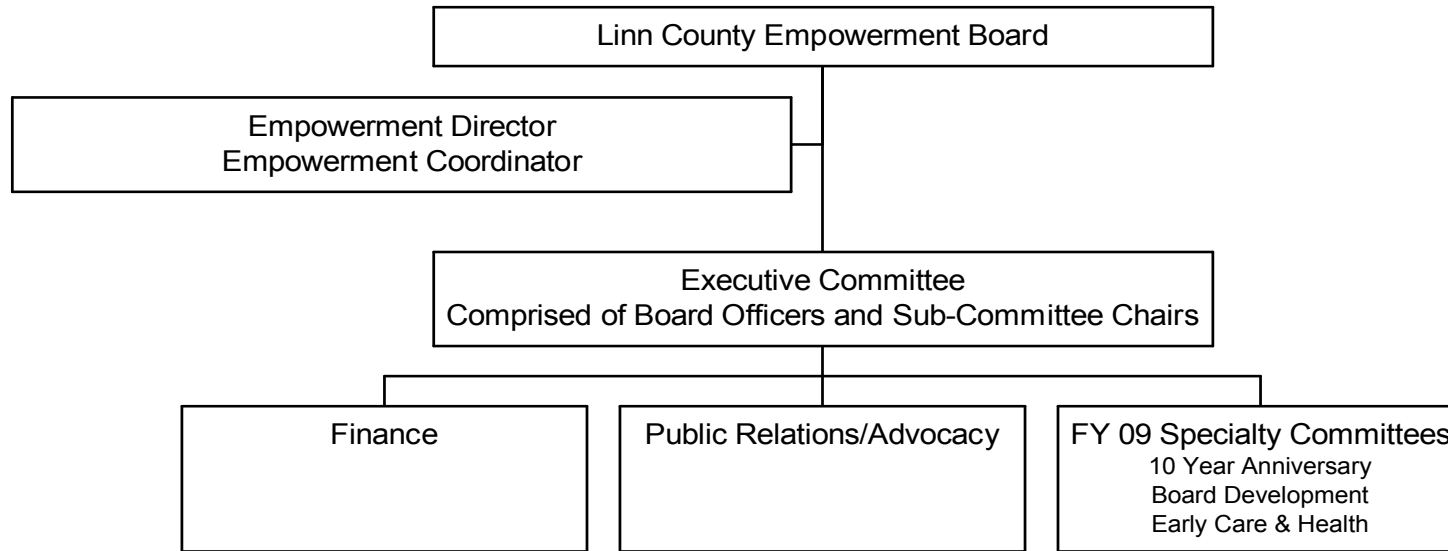
Number of Board Members (Board Size): **27 Board Members**

Column 1 <i>Name</i>	Column 2 <i>Representation</i>	Column 3 <i>Name of Employing Organization</i>	Column 4 <i>Member or Employing Organization receives CE Funds either directly or indirectly</i>	Column 5 <i>Citizen/Elected Representative</i>
Chair: Dave Loy		Partnership for Safe Families		Citizen
Vice Chair: Mary Tharp		Mercy Hospital		Citizen
John Brandt	<i>Required human services</i>	Linn County Community Services	Fiscal Agent for Empowerment Board	Not Applicable per IA Code
Kent Jackson	<i>Required health</i>	St. Luke's Hospital	St. Luke's Foundation is fiscal agent for TIES program	Not Applicable per IA Code
Val Dolezal	<i>Required education</i>	Cedar Rapids School District- Principal	CR School District receives scholarship and transportation \$	Not Applicable per IA Code
Carol Sundberg	<i>Required faith</i>	St. Paul's United Methodist Church		Citizen
Suresh Basnet	<i>Required business</i>	Financial Planner		Citizen
Sara Kohl	<i>Required consumer</i>	Community Volunteer		Citizen
Jim Barth		Retired		Citizen
Cynde Clymer		FOCUS Preschool	Serves as a facilitator for the Parent Education Consortium classes	No
Cheryl Collins		Hawkeye Area Community Action Program (HACAP)	HACAP is recipient of Empowerment \$ for FCHA, PACES, QECE, five giant steps	No
Curtis Dickson		Linn County Public Health Department		Citizen
Romaine Foege		Retired		Citizen
Shannon Hanson		YMCA-Cedar Rapids Metro		Citizen
Paula Hinzman Mitchell		City of Cedar Rapids		Citizen
Amy Jackson		Abbe Center for Community Mental Health	Abbe Center is employer of record of one TIES staff	No
Julie Jensen		Linn Mar Community	Linn Mar is site of school-	No

		School District	based preschool that receives Empowerment \$	
Laurene Lanich		Grant Wood AEA	GWAEA is the fiscal agent for one Empowerment funded program: CART	No
Kristi Kearney		Wee Wisdom Preschool	Her staff may have attended an Empowerment funded training	No
Melissa Kiliper-Ernst		Community Volunteer		Citizen
Rich Mitvalsky		Gray, Stefanie & Mitvalsky PLC		Citizen
Melanie Nollsch		Kirkwood Community College		Citizen
Geri Pettitt		Retired		Citizen
Barbara Ruppel		Waypoint Services		Citizen
Connie Schulte		Rockwell Collins Child Development Center	Center is a participant in QECE program	No
Caroline Stout		United Way of ECI	Co-funder of QECE program	No
Jennifer Tibbets		Catherine McAuley Center		Citizen
16 Citizen/Elected (59%)				
11 Professionals				

a. **Organizational Structure**

- Describe your organizational structure in FY 09.



The Empowerment Director is a 1.0 FTE whose duties include coordination of the Linn County Decat Board. The Employer of record for the Director is Linn County. In FY 09 the Board also received staff support from a 1.0 FTE Empowerment Coordinator funded with Program funds. The Coordinator reported to the Director and was an employee of Linn County. The Coordinator left the position in February 2009 and was not replaced due to pending budget cuts.

The Board has three (3) standing committees: Executive, Finance and Public Relations, to assist with standard Board Operations. In addition, the Board establishes Specialty Committee each year to focus on pressing topics for that fiscal year. For example, in FY 09 the Linn County Empowerment Board celebrated 10-years as a designated CEA and established a committee to commemorate the event.

- **Describe how the board functions, communicates, plans and interacts as a decision-making board.**

A 27-member Governance Board heads the Linn County Community Empowerment organization structure which annually elects a Chair, Chair Elect, Secretary and Treasurer. The succession plan is for the Chair-Elect to serve as Chair the following year. The Executive Committee is comprised of the four (4) Board Officers and the Chairpersons of the Board Committees.

Each Board member is required to serve on a Board Committee. Members self-select their Committee based upon interest. Specific activities are assigned to each of the Board Committees per their areas of expertise. For example the Public Relations Committee is responsible for the annual Legislator event and coordinating participation at the Day on the Hill event. The Chair of each Board Committee reports to the Executive Committee monthly and as needed to the Governance Board. Committee minutes are always included in the monthly Board packet. The Governance Board, the Executive Committee and most of the Committees meet monthly. Items requiring action are

presented to the Linn County Community Empowerment Governance Board. The Board follows Roberts Rules and operates in accordance with By-Laws that are reviewed every two-years.

Annually the Board members complete a survey assessing the strengths and weaknesses of the Board operations. Results were shared with the Board Development and Executive Committees which created an Action Plan for FY 10. For example in FY 09 the Board expressed interest in closer contact with Empowerment funded programs. An action step for FY 10 is for the Board to hold three (3) of its Board meetings at funded program sites coupled with a tour of the program.

- **Describe how the board functions, communicates and plans with partners in the community.**

The Empowerment Board strives to initiate contact with the community in several ways. Below are just a few of the intentional activities to communicate with local partners:

- Speakers from community planning groups are invited to present at Board meetings (e.g. PLAY group & CELI).
- The Board provided letters of support to school districts seeking SVPP and to the local CAP agency in their efforts to obtain additional Federal stimulus dollars.
- Maintains a website (www.linncountycommunityempowerment.org).
- Provides articles to the local Linn County newsletter and the State Empowerment newsletter.
- Linn County Community Empowerment Board members also serve on 22 other community boards, which allows for frequent cross-communication with local boards and initiatives.
- Linn County Community Empowerment Board maintains its membership in the Cedar Rapids Chamber of Commerce.
- Coordinates an annual luncheon with legislators during Day on the Hill that is well attended by both legislators and Board members.
- Empowerment staff completed a crosswalk of local programs funded by Decat, Empowerment, United Way and Greater Cedar Rapids Community Foundation and shared the information with community partners.
- Community surveys on local needs were completed and included in the Linn County Early Childhood Plan.
- Empowerment staff facilitated braided funding meetings with local private and school based preschool & Head Start providers to identify ways to maximize the various funding streams.
- Board and Staff serve on the *five giant steps* collaborative and collaborated on the release of two post-Flood reports.
- Board and Staff serve on the local planning group that will be submitting a SAMHSA federal grant on child mental health services.
- At the Redesignation site visit we had exceptional participation from community partners.
- The Linn County Empowerment Board funds three (3) programs that have caught the attention of neighboring Empowerment Boards. Specifically, the Childcare Alliance Response Team (CART), the Provider and Child Educator Services (PACES) and the Quality Early Childhood Environment (QECE) programs. At regional Coordinator meetings the Linn County Empowerment staff shared information on the success of these programs and subsequently provided its competitive request for proposal documents for use by interested Empowerment Boards.
 - The Linn County CART program is being replicated in Johnson and Washington County Empowerment areas.
 - The Linn County PACES program is beginning implementation in Jones County Empowerment.
 - Benton County Empowerment is modeling its QECE project after the Linn County program.

- **Describe the process the Board utilizes to track expenditures for the Community Empowerment funding.**

Annually the Budget requests from Empowerment programs are reviewed by the Finance Committee and then acted upon by the Board. The budget form contains seven categories for expenses. Programs are not allowed to alter their approved budget without prior approval from the Empowerment Director and Fiscal Agent.

Programs are required to submit claims for reimbursement by the 10th of each month to the fiscal agent. The fiscal agent reviews the claim and documentation and prepares a detailed monthly report. Contained in the report are the approved budget amounts for each Program, the claims this month and the expenses year-to-date per budget category. For ease of use it also contains % utilization for each program. The report form is reviewed monthly by the Finance Committee and included in the monthly Board packet for review.

In February of each year the Empowerment Director sends a short survey to each program asking them to project their utilization for the remainder of the year. This assists the Finance Committee to determine if a program is experiencing barriers to spending their funding which may impact the Board's carryforward amount. In addition the Empowerment Director monitors the carry forward amount and regularly shares a report with the Board on estimated year-end carry forward.

- **Describe a difficult situation or new process that the board experienced this year. Please include a summary as well as lessons learned by the board because of the situation or new process.**

The Linn County Community Empowerment Board was pleased to bring the nationally recognized Regional Intervention Program (RIP) to Iowa. The RIP model was developed at Vanderbilt University in 1969. The program provides in-depth training to parents of young children who have significant behavior problems, in order to improve child behavior and interactions with others. Longitudinal studies have shown it to be very effective at making significant long term improvements in child behavior. The Center For Evidence-Based Practice has identified RIP as one of four behavioral intervention programs that meets its criteria to be considered an effective model.

Linn County Empowerment Board began the process to become the first RIP replication site in Iowa in Fiscal Year 2007 by using Quality Improvement Funds to send 6 community partners and 1 Empowerment staff to Tennessee for a 2-day on-site observation. The team came back convinced this model would be of great benefit to Linn County families. A competitive process was initiated and a lead agency was identified in FY 08 to implement the RIP model and a contract was signed with a state-wide child therapy clinic with a local office in Cedar Rapids. Unfortunately the RIP implementation was problematic from the start and the difficulties with the lead agency could not be remedied. The Linn County Empowerment Board retained legal counsel, as did the lead agency, and the ultimate decision was not to renew the contract in FY 09 with that provider. Thus FY 09 was a pivotal year for the Board to determine next steps.

The RIP replication process had been difficult, the legal bills expensive and the entire process was frustrating to the Board, the community partners and to families that tried to enroll in the program. The reputation in the community of the local RIP program was dubious to say the least! The Board realized that future Empowerment funding was uncertain due to State economic issues and was understandably hesitant to spend additional resources on a program that had failed so miserably. However, they allowed the original community partners & Empowerment staff to review the situation and to provide the Board with options.

The community partners and staff who had traveled to Tennessee to observe the program were convinced that this program worked and was needed in Linn County. They approached the Board with the idea of a negotiated procurement process- essentially hand-picking the next lead agency, based on their collective opinion of who in the community was the best site for this intensive program. This process was counter to the Board protocol of competitive selection process but they were open to the suggestion. The Community partners and staff then held meetings with entities deemed most compatible with the RIP model.

In the end the community partners mutually agreed that a local hospital was the best physical location but that several community partners would each provide staffing or other resources to make this a true collaborative. For example, St. Luke's Hospital is the physical location and employer of record of the Coordinator, Healthy Linn Care Network provides marketing services, the Abbe Center is the employer of record of the Co-Coordinator and staff from Grant Wood AEA and Mercy Hospital serves on the program's Advisory Council and are conduits to their agencies vast resources. The end result is a beautifully choreographed approach to providing this unique service to local families.

In FY 09 68 children and 42 families were served and the new site is on the fast-track to being a formally recognized RIP replication site. More importantly parent participants in the program have volunteered to speak at the Linn County Empowerment Board meeting about their life changing experience in the program and parents were the hosts of a community open house for the project. You can read more about this program and its outcomes, locally called the TIES program, on page 27-28 of this report.

The Board could have justifiably walked away from this expensive experiment and been resistant to the community partner's recommendation to alter their usual procurement process. However the Empowerment principle of **local control** empowered the local Board to continue to be innovative, to support this new process and to rely on the input of their community partners. As a result a true collaboration was born and is making a significant impact on children and families.

SECTION II – Community Plan and Collaborative efforts to Achieve Results

A. Community Plan Updates

There are no changes to the Linn County Early Childhood Plan that was submitted September 2008.

B. Community Collaborative Efforts

Describe at least two (2) successful collaborative efforts within the Community Empowerment Area during the last year that promote healthy and successful children 0-5 and their families. The two examples chosen should reflect creative solutions, and positive engagement and commitment of the community.

Flood Recovery

In June 2008 Linn County residents experienced the fifth largest disaster in the history of the United States and the largest in the State of Iowa. The Flood disaster began to unfold on June 10, 2008. Over 10.5 square miles of Linn County's largest city-Cedar Rapids was submerged, 700 businesses damaged and 5,400 homes inundated with flood water. Estimates are that 19,000 residents were evacuated and 9,000 employees impacted as businesses closed either temporarily or permanently. Among the many critical services interrupted or lost in the disaster was the provision of child care services. In the flood-affected areas of Cedar Rapids and Palo over 18 licensed centers and 45 registered homes were damaged, resulting in the immediate loss of 1,547 slots of care. It was evident that immediate, short and long term support was needed for those providers and the families they serve.

The Linn County Emergency Management team recognized the Empowerment Board as the local contact of early childhood resources and Empowerment staff was notified of this need. A quick assessment determined that free, quality drop-in care for families was a high priority and that unaffected child care providers were quickly reaching capacity. Thus, the need was to find alternative options and fast. After a series of phone calls from Empowerment staff and Board members, & volunteers, a partnership was formed with two churches that offer on-site Sunday child care and had not yet started up their summer bible camp programs. The churches had the space, the appropriate child toys and a cadre of volunteers that had already had background checks completed and were eager to help. The church staff organized the meals, the classroom supplies, the volunteers and provided direct support and comfort to the families and children.

Empowerment staff then coordinated the media press releases and ensured that child behavioral supports through Abbe Center and the Empowerment funded CART program were provided. ISU Extension staff was contacted to come to the sites and provide programming. The local CAP agency- HACAP- was called and readily provided free nutritious snacks from the food bank to the child care. In addition the Empowerment staff, Decat and *five giant steps* partners volunteered their time to serve as child care aides at the churches. When the short term care was stopped it was determined that over 115 unduplicated children were served. Before the sites were closed families were notified about the already existing Crisis Child Care program that could temporarily place their child at a family child care home at no expense.

Complementary to this flood child care recovery project are the efforts of several Empowerment Board members. One member is the Principal of a school-based Early Childhood Center and she opened her school to assist families with child care needs. School personnel volunteered their time to staff the classrooms. Another Board member is our Faith representative and his church became the focal point for donations of food, clothing, diapers, furniture etc. The emergency child care sites made regular trips to his Church to pick up items to share with families as they dropped off or picked up their children. Staff from United Way serves on the Empowerment Board and was able to keep

the Empowerment staff current on available flood resources and helped to advertise the emergency child care sites to families that called into 211 seeking help. These networks were seamlessly initiated with one call to Empowerment by the Linn County Emergency Management Center. This is the power of Empowerment at the local level.

Toy Drive

An excerpt from a post-Flood report documents that 16% of the total child care capacity in Cedar Rapids was extensively damaged in the flood. Over 1500 children and their parents were forced to find alternative child care. (Source: *five giant steps*, "Effects for June 2008 flood on Local Early Care and Education Services".) Child care providers and the children they serve were deeply impacted by the disaster. Over 1-year later several child care providers have not yet reopened. Those that did re-open face an uphill battle to pay expenses and to re-enroll families during an economic downturn.

Concurrently a Linn County Board committee was planning a Party to commemorate our 10th year as an Empowerment area. The Committee was very aware of the strained environment in our area due to the flood and the recession and was looking for a way to celebrate the 10-Year milestone while also giving back to our wounded community. Since all good parties need a theme and Linn County Empowerment was 10-years old the committee decided to throw a Birthday Party!

With the help of the Empowerment-funded PACES program the Board identified five (5) flooded child care home providers that would benefit from community support. It was discovered that each child care home had lost their outdoor toys in the flood and there was just not enough money to replace them. The local Board and PACES joined forces and placed Linn County Empowerment on the Baby Registry list at ToysRUs store. Appropriate outdoor toys were selected by the Child Care Specialists at PACES and listed on the Baby Registry for others to purchase.

Then the invitations for the 10-Year celebration were mailed and e-mailed to a broad audience. On the invitation to the Linn County Empowerment Party the guests were asked to check out the ToysRUs baby registry and bring a gift to the Party! The end result was the donation of **over 65** Outdoor Toys to the five child care home providers which were happily delivered by Empowerment staff and Board members. A silver lining to the rain clouds!

C. Provide an update on the early childhood system strategies that were developed in your empowerment area through the Early Childhood Iowa/National Governor's Association Regional meetings.

Priority One: Meetings of organizations with community plans.

All known early childhood plans were obtained and reviewed for inclusion in the Linn County Empowerment Board's FY 09-11 Early Childhood Community Plan. A summary of the various assessments is included on pages 37-39 of the Community Plan.

Priority Two: Recommendations from umbrella community plan including flexible funding for Empowerment that will meet local and changing needs especially as other funding streams diminish or become available.

The Empowerment Director prepared a cross-walk summary that compared the primary sources of early childhood funding in Linn County. The document was shared with Empowerment Board, United Way and the Decat Board. Results indicate that providers in the County have multiple options for funding Parent Education and Family Support programs. However, Linn County Empowerment is the largest primary local

source of funding for preschool and part or full-day childcare. The Empowerment Director shared this important point with the State LEAN team and requested options be discussed to re-establish flexible funding so Empowerment areas could locally determine where the majority of their funds should be directed. In Linn County the gap that Empowerment fills is as a funder of high quality part and full-day child care/preschool.

Priority Three: Fund local level infrastructure and pilot projects to sustain efforts based on Colorado model (e.g. novice, advanced levels). The Colorado model, and others, are being researched as part of the Levels of Excellence/Categories of Achievement focus of the LEAN team. The Empowerment Director and a Linn County Childcare Center Director are assigned to the team that is working on tiered levels of services and supports in Empowerment areas.

SECTION III – Achieving Results

A. Community Plan Priorities

1. Preventive Health
2. Mental Health and Behavioral Supports
3. Affordable High Quality Early Care and Education
4. Child and Family Support
5. Community Where Children Are Valued

B. Community Plan Indicators

Identify the indicators as determined by the CEA Board and how the indicators are linked to the State Results.

Definition: Indicators are measures that quantify the achievement of a result and your priorities.

Definition: Goals are broad measurable statements of intent to set a future direction.

Codes for Identifying state results for Indicators:

A. Healthy Children

B. Secure & Nurturing Families

C. Secure & Nurturing Child Care Environments

D. Children Ready to Succeed in School

E. Safe & Supportive Communities

Community Empowerment Area Indicators for Linn County	State Results Linked to Indicator	Identify the Source of data for each Indicator	Baseline Data (date & numerical value)	Subsequent Year's Data (Trend Line) Identify the Year			Goal (numerical value & timeline)	Progress Update (Brief Analysis of data)
Low Birth Weight Babies (# & % under 5lb 5oz)	A	Iowa Kids Count (C&FPC site)	2000 150 5.5%	2005 205 7.4%	2006 199 6.9%	2007 Linn Co 204 7.2% State 11.6%	Low birth weight rate under 7% by July 1, 2011.	The % in Linn County is increasing but is below the State average.
Prenatal Drug Exposure (# & % that test positive)	A	Children At Risk Task Force Yearly Report	2002 73 9%	2006 39 4.2%	2007 46 4.6%	2008 52 4.99%	Confirmed positive prenatal drug exposure < 4% by July 1, 2011	Increase noted in 2008.
Hawk-I insurance (# enrolled) Title XIX Medicaid (# enrolled)	A	Linn County hawk-I outreach coordinator	2000 332 na	2007 1329 na	2008 1281 12,688	2009 1260 13,659	Increase # of children enrolled in hawk-i and Title XIX by 200 each year.	In FY 09 the # of children enrolled in hawk-i declined but 971 more enrolled in Title XIX.

Linn County FY 09 Annual Report

<p>Iowa Quality Rating System participation by Level</p> <p>1 = entry level 5 = highest level</p>	<p>C</p>	<p>DHS website</p> <p>Level 1</p> <p>Level 2</p> <p>Level 3</p> <p>Level 4</p> <p>Level 5</p> <p>Total</p>	<p>June 2006</p> <p>0</p> <p>2 homes</p> <p>0</p> <p>0</p> <p>0</p> <p>2</p>	<p>May 2007</p> <p>2 homes</p> <p>11 homes 2 centers</p> <p>1 home</p> <p>0</p> <p>0</p> <p>16</p>	<p>May 2008</p> <p>3 homes</p> <p>15 homes 2 centers</p> <p>6 homes 5 centers</p> <p>1 home</p> <p>0</p> <p>32</p> <p>6.7%</p>	<p>May 2009</p> <p>3 homes 1 center</p> <p>16 homes 2 centers</p> <p>3 homes 6 centers</p> <p>3 homes</p> <p>0</p> <p>34</p> <p>7.6%</p>	<p>15% of registered/licensed child care providers in Linn County will participate in QRS by July 1, 2011.</p>	<p>From 06-09 the # of homes and centers participating in QRS increased 1,600%</p> <p>The FY 09 increase in total # is due to center participation.</p> <p><u>FY 09:</u> 34 QRS participants/446 total (140 centers and 306 homes) = 7.6% participation rate</p>
<p>Overall participation</p>	<p>C</p>	<p>Childcare Resource & Referral</p>	<p>June 2005</p> <p>0</p>	<p>June 2007</p> <p>1</p>	<p>June 2008</p> <p>5</p> <p>22</p>	<p>June 2009</p> <p>5</p>	<p>7 NAFCC accredited child care homes in Linn County by July 1, 2011.</p>	<p>500% increase in # of accredited homes from 2005-2009, Linn County.</p>
<p>State of Iowa</p>	<p>C</p>	<p>Childcare Resource & Referral</p>	<p>June 2005</p> <p>15</p>	<p>June 2007</p> <p>16</p>	<p>June 2008</p> <p>6*</p>	<p>June 2009</p> <p>12</p>	<p>Increase the # of accredited child care centers by 1% annually.</p>	<p>*Significant change in NAEYC standards delayed many centers re-accreditation.</p>
<p>NAEYC Accredited Center/Preschool (#)</p>	<p>C</p>	<p>Childcare Resource & Referral</p>	<p>June 2005</p> <p>15</p>	<p>June 2007</p> <p>16</p>	<p>June 2008</p> <p>6*</p>	<p>June 2009</p> <p>12</p>	<p>Increase the # of accredited child care centers by 1% annually.</p>	<p>*Significant change in NAEYC standards delayed many centers re-accreditation.</p>
<p>Pre-Literacy Skills (% proficient on identifying beginning sounds, DIBELS)</p>	<p>D</p>	<p>State Empowerment website (Kindergarten Literacy Assessment)</p>	<p>2005-06 Linn Co 70.12%</p> <p>State 53%</p>	<p>2006-07 Linn Co 58.03%</p> <p>State 56%</p>	<p>2007-08 Linn Co 53.52%</p> <p>State 60%</p>	<p>2008-2009 Linn Co 57.16%</p> <p>State 62%</p>	<p>Linn County proficiency at 70% by July 1, 2011.</p>	<p>Annual decrease in % of kindergarteners proficient in pre-literacy since Trend year with exception in the most recent school year.</p>
<p>4th graders proficient in Reading (% ITBS)</p>	<p>D</p>	<p>Iowa Kids Count</p>	<p>2003 Linn Co 75.4%</p> <p>State 75.9%</p>	<p>2005 Linn Co 76%</p>	<p>2006 Linn Co 78.9%</p>	<p>2007 Linn Co 81%</p> <p>State 78.8%</p>	<p>Linn County proficiency results will increase 1% annually.</p>	<p>7.4% improvement from 03-07, Linn County.</p>
<p>4th graders proficient in Math (% ITBS)</p>	<p>D</p>	<p>Iowa Kids Count</p>	<p>2003 Linn Co 74.4%</p> <p>State 75%</p>	<p>2005 Linn Co 77%</p>	<p>2006 Linn Co 80.9%</p>	<p>2007 Linn Co 82.6%</p> <p>State 80.7%</p>	<p>Linn County proficiency results will increase 1% annually.</p>	<p>11% improvement from 03-07, Linn County.</p>

Unemployment rate (# & %)	E	Iowa Kids Count	2000 Linn Co 2,100 1.8% State 2.6%	2005 Linn Co 5,300 4.6%	2006 Linn Co 4,200 3.6%	2007 Linn Co 4,400 3.8% State 3.8%	Linn County rate will not exceed State figures.	109.2% change from 2000-07, Linn County.
Food Assistance (# & % receiving)	E	Iowa Kids Count	2000 Linn Co 6,959 3.6% State 4.3%	2005 Linn Co 15,479 7.8%	2006 Linn Co 16,580 8.2%	2007 Linn Co 17,663 8.5% State 8.1%	Linn County rate will decrease by 1% annually.	136.4% change from 2000, Linn County.
Confirmed child abuse of children birth to 5 (# and as % of total abuse age 0-17) State of Iowa	B	Prevent Child Abuse Iowa	2003 Linn Co 495 51.7%	2006 Linn Co 551 51.3% State 49.4%	2007 Linn Co 568 53.4% State 50.6%	2008 Linn Co 378 55.2% State 53.1%	Number of Linn County confirmed child abuse cases will decrease by 25 annually.	The total # of children abused in 2008 declined significantly but the majority of abuse occurs to those under age 6.
Child Poverty Rate (# & % of children live below poverty)	B	Iowa Kids Count	2000 Linn Co 3,611 7.6% State 10.8%	2003 Linn Co 4,969 10.5%	2004 Linn Co 5,536 11.7%	2005 Linn Co 6,065 13.1% State 13.9%	Linn County child poverty rate will decrease by 1% annually.	72.4% change from 2000-2005, Linn County.

SECTION IV: Early Childhood (Federal) Programs/Services to Support the Priorities
Performance Measures: Community Empowerment Federal Early Childhood Funds

Early Childhood Services Provided	Community Plan Priority or Priorities	How Much Was Invested? (Inputs)	How Much Was Done or Produced? (Output Measures)	How Well Did We Do It? (Quality/Efficiency Measures)	What Was the Change In Conditions for Those We Served? (Outcome Measures)
<p>Grant Early Childhood Center Wraparound/ Cedar Rapids School District</p> <ul style="list-style-type: none"> Extended Hours <p>Full-day full-year wraparound of school –based Shared Visions program. (7:30 am-5:30 pm, Mon-Fri)</p>	<p>Priority # 3 Affordable High Quality Early Care and Education</p>	<p>Amount Expended: \$87,726.00</p> <p><u>Staff:</u> 1 FTE Classroom Teacher</p> <p>.8 FTE Teacher Associate</p> <p>.5 FTE Teacher Associate</p>	<p>16 full-day full year slots</p> <p>25% of slots served Early Childhood Special Education children</p> <p>16 families served</p> <p>7 Parent/Family activities held</p> <p>48 Home Visits completed</p> <p>14 Pre and Post DECA or Brigance assessments administered</p> <p>4 Individual Education Plans implemented during extended care hours</p>	<p>6 children placed on waiting list this FY (peak #)</p> <p>\$5,482 per slot cost</p> <p>Shared Visions classrooms obtained NAEYC Re-Accreditation June 2009</p> <p>67% of staff have degree or certification in early childhood</p> <ul style="list-style-type: none"> Teacher has bachelor in Early Childhood Education. One paraprofessional holds para certification with specialist in Early Childhood. <p>62% of parents attended Family Activity & 100% attended Teacher Conferences</p> <p>100% of children participated in Grant Wood AEA Child Check</p> <p>100% of children received dental screening</p> <p>5 referrals made to community resources</p>	<p>100% of full-day full-year high quality slots were maintained</p> <p>95% of families in wraparound remained employed, in job training or school</p> <p>87% average daily attendance of children in Wraparound care</p> <p><u>% of children with age appropriate school readiness skills</u></p> <p>Fall 08 Pre-DECA: 81%</p> <p>Spring 09 Post-DECA: 94%</p> <hr/> <p>Fall 08 Pre-Brigance: 56%</p> <p>Spring 09 Post- Brigance: 75%</p> <p>100% of children with special needs demonstrate increase in skills</p> <p>75% of parents with children in Early Childhood Special Education report increase in child’s development</p> <p>100% of referrals to community services resulted in family need resolved</p> <p>50% of children served did not have prior preschool experience</p>

				<p>100% of families received a Home Visit</p> <p>88% of children received both a Pre-Post skill assessment</p>																			
<p>Polk Elementary Wraparound/ Cedar Rapids School District</p> <ul style="list-style-type: none"> Extended Hours <p>Full-day full-year wraparound of school-based Shared Visions program. (8:30-5:30 pm)</p>	<p>Priority #3 Affordable High Quality Early Care and Education</p>	<p>Amount Expended \$69,787.22</p> <p><u>Staff:</u> Lead Teacher 1.0 FTE</p> <p>Para Professional .75 FTE</p>	<p>15 full-day full year slots</p> <p>15 families served</p> <p>8 Parent/Family activities held</p> <p>15 Home Visits provided</p> <p>15 Pre and Post DECA or Brigance assessments administered</p>	<p>0 children placed on waiting list this FY (peak #)</p> <p>\$4,652 per slot cost</p> <p>Shared Visions classrooms obtained NAEYC Re-Accreditation June 2009</p> <p>88% of parents attended Family Activity & 100% attended Teacher Conferences</p> <p>87% of children participated in Grant Wood AEA Child Check</p> <p>100% of children received dental screening</p> <p>100% of families received a Home Visit</p> <p>100% of children received a Pre-Post skill assessment</p>	<p>100% of full-day full-year high quality slots were maintained</p> <p>85% of families in wraparound remained employed, in job training or school</p> <p>87% average daily attendance of children in Wraparound care</p> <p><i>% of children with age appropriate school readiness skills</i></p> <p>Pre-Post results of Work Sampling Checklist (Scale = In Process or +)</p> <table border="1"> <thead> <tr> <th><u>Child Exhibits:</u></th> <th><u>PRE</u></th> <th><u>POST</u></th> </tr> </thead> <tbody> <tr> <td>Self Direction</td> <td>93%</td> <td>95%</td> </tr> <tr> <td>Knowledge of Letters</td> <td>21%</td> <td>49%</td> </tr> <tr> <td>Understand Numbers</td> <td>47%</td> <td>67%</td> </tr> <tr> <td>Gross Motor Skills</td> <td>85%</td> <td>92%</td> </tr> <tr> <td>Fine Motor Skills</td> <td>57%</td> <td>74%</td> </tr> </tbody> </table> <p>27% of children served did not have prior preschool experience</p>	<u>Child Exhibits:</u>	<u>PRE</u>	<u>POST</u>	Self Direction	93%	95%	Knowledge of Letters	21%	49%	Understand Numbers	47%	67%	Gross Motor Skills	85%	92%	Fine Motor Skills	57%	74%
<u>Child Exhibits:</u>	<u>PRE</u>	<u>POST</u>																					
Self Direction	93%	95%																					
Knowledge of Letters	21%	49%																					
Understand Numbers	47%	67%																					
Gross Motor Skills	85%	92%																					
Fine Motor Skills	57%	74%																					
<p>Childcare Alliance Response Team (CART) @ Grant Wood AEA</p> <ul style="list-style-type: none"> Center Child Care Consultants <p>On-site technical assistance &</p>	<p>Priority #2 Mental Health & Behavioral Supports</p>	<p>Amount Expended \$112,283.21</p> <p><u>Staff</u> Child Care Specialist 1.0 FTE</p> <p>Social</p>	<p>26 child care sites received services:</p> <ul style="list-style-type: none"> 23 centers 2 preschool 1 home <p>43 children received services</p>	<p>Average length of time services provided: 4 months</p> <p>20 sites (77%) are repeat customers who seek assistance with new/ additional child or classroom.</p> <p>6 new CART sites</p>	<p>84% of children maintained their child care setting during CART involvement</p> <p>97% of families that maintain employment of job training while child enrolled in CART</p> <p>100% of children received the early childhood service to which they were referred</p>																		

<p>environmental assessments for center providers that serve children with challenging behaviors.</p>		<p>Worker/Child Care Specialist .5 FTE</p>	<p>48 calls for assistance received from:</p> <ul style="list-style-type: none"> • 12 from parents • 31 from child care providers • 5 other sources <p>6 presentations, outreach activities conducted to market CART services</p> <p>5 children referred for additional services: Family Physician</p> <p>24 Pre & Post Devereux (DECA) assessments conducted</p> <p>30 Provider Perception Surveys completed on CART services</p> <p><u>Child Care Quality</u> 14 Pre & Post Environmental partial Rating Scale assessments completed: -12 ECERS -1 ITERS -1 FDCRS</p> <p>18 full Environmental Rating Scale assessments completed by collaborative partner: QECE</p>	<p>\$2,611 per child cost</p> <p>2 children expelled from child care setting during CART involvement. (5 left child site due to move or parent choice)</p> <p>54% of parents participated in the Case Closeout Process with CART staff.</p> <p>9.4% of children receive referrals for additional services</p> <p>96% of the DECA assessments were completed/returned by providers</p> <p>88% Response rate on Provider Survey</p> <p>Provider Survey Results: <u>Recommend CART:</u> 100% would recommend CART to other providers</p> <p><u>Satisfaction w/CART:</u> 100% were satisfied with CART services</p> <p>54% of providers receive both a partial Pre and Post Environmental Rating Scale from CART staff</p>	<p><u>Post DECA (after CART intervention)</u> 100% of children showed an improvement on the Initiative subscale.</p> <p>83% of children showed an improvement on the Self-Control subscale.</p> <p>92% of children showed an improvement on the Attachment subscale.</p> <p>92% of children showed an improvement on the Behavioral subscale.</p> <p><u>Provider Survey Results</u> Percentage of providers reported:</p> <ul style="list-style-type: none"> • Child's Behavior Improved: 96% • Provider Gained Skills: 96% • Made Changes to Site: 100% <p><u>Post Environmental Rating Scale (ERS) Results</u></p> <ul style="list-style-type: none"> • 86% of sites improved score in Activities • 86% of sites improved score in Language/Reasoning <p><u>ERS Scale:</u> 1 (low) - 7 (high) Pre-CART ave. score on Activities: 3.3 Post-CART ave. score on Activities: 3.5</p> <p>Pre-CART ave. score on Language: 3.4 Post-CART ave. score on Language: 4.2</p>
---	--	--	--	---	--

<p>Provider & Child Educator Services (PACES) @ HACAP</p> <ul style="list-style-type: none"> • Provider Training/ Professional Development/ Materials & • Home Child Care Consultants <p>In-home visitation to home-care providers that includes curriculum guidance, monthly activities and assistance with CACFP, DHS and NAFCC requirements.</p>	<p>Priority # 3 Affordable High Quality Early Care & Education</p>	<p>Amount Expended \$231,899.99</p> <p>Staff: PACES Supervisor 1.0 FTE</p> <p>Early Childhood Teacher 1.0 FTE</p> <p>Child Care Development Coordinators 1.375 FTE</p> <p>Child Care Educator 1 FTE</p>	<p>Highest # of Home Care providers enrolled in PACES this FY: 63</p> <p># of new Home Care providers enrolled: 10</p> <p># of 0-5 yr child care slots that are in a PACES Home Care provider: 464</p> <p># of collaborative trainings/conferences co-sponsored by PACES: 26</p> <p># of home visits provided to PACES Home Care providers by type:</p> <ul style="list-style-type: none"> • 636 Curriculum • 43 ChildNet Cert/Re-cert • 99 Accreditation support <p># of scholarships awarded to providers for conferences or coursework: 5</p> <p># of equipment stipends awarded: 43</p> <p># of ChildNet stipends awarded: 9</p> <p>Total # enrolled in NAFCC Accreditation project: 10</p>	<p>Of the enrolled PACES providers the % that are new this FY: 16%</p> <p># of identified 0-5 child care slots in Linn County: 10,866</p> <ul style="list-style-type: none"> • % of identified 0-5 yr slots that are in PACES providers: 4.3% <p>\$3,681 per provider cost</p> <p># of providers attending trainings/conferences co-sponsored by PACES: 694 (not dup)</p> <p>% of Home Care providers receive an In-Home visit by PACES staff: 100%</p> <p><u>Since FY 00 inception of PACES</u></p> <ul style="list-style-type: none"> • # of home care providers that have enrolled in PACES: 176 • # of home care providers complete Child Net: 103 • % of PACES providers enrolled for 3+ years: 77% <p># of PACES Home Care providers obtain NAFCC Accreditation: 5 to date</p> <ul style="list-style-type: none"> • 1 this FY with 1 pending • 4 in prior FY 	<p>Ave Test Score of PACES Home Care providers on ChildNet Training topics:</p> <ul style="list-style-type: none"> • Good Health Practices: 95% • Learning Environments: 100% • Developmental Milestones: 100% • Professionalism: 99% • Guidance & Inclusion: 97% <p>Comparison Data</p> <p><u>% Providers Registered with DHS</u></p> <ul style="list-style-type: none"> • PACES providers: 100% • Non-PACES providers: 25% <p><u>% Enrolled in Food Program (CACFP)</u></p> <ul style="list-style-type: none"> • PACES providers: 95% • Non-PACES providers: 9.3% <p><u>% ChildNet Certified</u></p> <ul style="list-style-type: none"> • PACES providers: 63% • Non-PACES providers: .3% <p>% increase in # of NAFCC accredited homes in Linn County: 500% since FY07. From 0 to 5!</p>
--	--	--	---	--	--

			<ul style="list-style-type: none"> # of Home Care providers newly enrolled this FY in Accreditation project: 2 		
			<p># of PACES Home Care Providers participate in Iowa Quality Rating System (QRS): 20</p>	<p><u>QRS Levels of PACES homes</u> Level 5: 0 Level 4: 2 Level 3: 5 Level 2: 12 Level 1: 1</p>	
<p>Quality Early Childhood Environments (QECE) @ HACAP</p> <ul style="list-style-type: none"> Quality Improvement Support/Incentives & Center Child Care Consultants <p>Consultation & TA for centers and preschools based on results of their ITERS/ECERS assessment.</p>	<p>Priority # 3 Affordable High Quality Early Care and Education</p>	<p>Amount Expended: \$108,232.00</p> <p><u>Staff:</u> Coordinator 1.0 FTE</p> <p>Training Specialist 1.0 FTE</p> <p>Child Care Program Mgr .38 FTE</p>	<p># of centers in project: 33</p> <p># of classrooms assessed: 47 -13 Infant/Toddler (0-3 yr) -34 Early Childhood (3-5 yr)</p> <p># of children in evaluated classrooms: 647</p> <p># of trained Infant Toddler Environmental Rating Scale (ITERS) volunteer Evaluators: 5</p> <p># of trained Early Childhood Environmental Rating Scale (ECERS) volunteer Evaluators: 10</p> <p># of trained Consultants: 14</p>	<p>% change in # of centers participating in project this FY: 3% decrease- flood impacted retention & recruitment of affected providers</p> <p>\$3,280 per center cost</p> <p>Cities where QECE centers are located: -Cedar Rapids, -Non CR-metro: Central City, Fairfax, Hiawatha, Lisbon Marion, Robins, Troy Mills</p> <p>% of classrooms that receive on-site evaluation, consultation and an Improvement plan: 100%</p> <p><u>Survey Results</u> *Evaluators: 78% report increased understanding of quality child care *Consultant: 90% report increased understanding of quality child care</p>	<p><u>Rating on Infant Toddler Environmental Rating Scale</u> (Scale: 1-low to 7-high)</p> <ul style="list-style-type: none"> Mean overall rating on Pre assessment: 3.83 <u>Mean overall rating on Post assessment: 4.66</u> <p>The Infant-Toddler overall quality of care aggregate increased 18%.</p> <p>100% of the sites rated with ITERS received higher ratings in all 6 areas on the Post evaluation.</p> <p><u>Rating on Early Childhood Environmental Rating Scale</u> (Scale: 1-low to 7-high)</p> <ul style="list-style-type: none"> Mean overall rating on Pre assessment: 4.43 <u>Mean overall rating on Post assessment: 5.18</u> <p>The Early Childhood overall quality of care aggregate increased 17.2%</p> <p>100% of the sites rated with ECERS received higher ratings in all 6 areas on the Post evaluation.</p>

			<p># of Center Improvement Requests Received: 34</p> <p># of trainings provided to QECE centers: 5</p> <p># of participating centers receive financial assistance w/ NAEYC Accreditation costs: 9</p>	<p>Ave \$ amount of Center Improvement Funds awarded per classroom: \$583</p> <p>Training topics:</p> <ul style="list-style-type: none"> • Sanitation • Born to Move • ISU ITERS • ISU ECERS • General TA 	<p># & % of QECE participants that obtain or renew NAEYC accreditation with program support: 2, 6%</p>
--	--	--	--	---	---

SECTION V –State School Ready Funds Programs/Services to Support the Priorities Performance Measures: Community Empowerment School Ready State Funds

- **Family Support and Parent Education – Prenatal through age 3**
 - # of Linn County Empowerment funded programs: Two

- **Family Support and Parent Education – Prenatal through age 5**
 - # of Linn County Empowerment funded programs: Three

- **Preschool Support for Low Income Families**
 - # of Linn County Empowerment funded programs: Five

- **Quality Improvement Funds**
 - # of Linn County Empowerment funded programs: Six

- **Other Programs/Services**
 - # of Linn County Empowerment funded programs: Eight

Family Support Performance Measures Prenatal Through Age 3 funding

Name of Family Support Program	Comm. Plan Priority	How Much Was Invested? (Input Measures)	How Much Was Done or Produced? (Output Measures)	How Well Did We Do It? (Quality/Efficiency Measures)	What Was the Change In Conditions for Those We Served? (Outcome Measures)
<p>Nurturing Parents Program @ Linn County Home Health</p> <ul style="list-style-type: none"> Family Support & Parent Ed Prenatal–Age 3 <p>In-home parent education to families whose children remain in their care, but are at risk of being removed due to poor parenting skills.</p> <p>Focus is serving non-court ordered families and teen parents. Uses Nurturing Parents curriculum.</p>	<p>Priority # 4 Child and Family Support</p>	<p>Amount expended: \$107,358.70 (0-3 yr \$)</p> <p><u>Staff:</u> 7 Protective Care Workers (2.0 FTE) 1 Service Coordinator (.25 FTE)</p>	<p># of children (ages 0 – 3) participating in family support/parent education program (undup): 122</p> <p>#of families <u>participating</u> in family support/parent education program (undup): data on 68 families (96 enrolled)</p> <p># of face-to-face visits completed: 631</p> <p># of group parent education meetings offered: 0</p> <p><u>Ethnicity of head of household:</u> Native American or Alaskan Native: 1 Native Hawaiian/Pacific Islanders: 0 African American: 3 Multi-racial: 4 Hispanic Latino: 4 Asian: 0 White: 55 Other: 1</p> <p><u>Household size</u> 2 persons: 30 3 persons: 20 4 persons: 9</p>	<p># & % of children, prenatal -3 years old, screened for developmental delays: 0, 0%</p> <p># of children screened that were referred to Early Intervention services: 0</p> <p># and % of direct service staff with Bachelor's level education or higher (health, human services, or education related field): 4, 44%</p> <p># and % of programs that have a national or state credential or have been accepted into the process: 1, 100% (accepted into Iowa Credential Program)</p>	<p><u>Protective Factors Survey</u> % of participating families that improve or maintain healthy family functioning, problem solving and communication: 100%*</p> <p>% of participating families that increase or maintain social supports: 100%*</p> <p>% of participating families that are connected to additional concrete supports: 100%*</p> <p>% of participating families that Increase knowledge about child development and parenting: 100%*</p> <p>% of participating families that improve nurturing and attachment between parent(s) and child(ren): 100%*</p> <p>*First year with new assessment tool. Program was flooded and was moved repeatedly during FY. Empowerment Director met with program staff to improve accuracy of year end data for FY 10.</p>

<p>Linn County Home Health - continued</p>			<p>5 persons: 5 6 persons: 2 >6 persons: 2</p> <p><u>Annual family income</u> 0-\$10,000: 43 \$10,001-\$20,000: 11 \$20,001-\$30,000: 6 \$30,001-\$40,000: 1 \$40,001-\$50,000: 1 \$50,001-\$60,000: 2 Over \$60,000: 4</p> <p><u>Marital status</u> Married: 16 Partnered: 7 Single: 37 Divorced: 5 Widow: 0 Separated: 3</p> <p><u>Educational level of head of household</u> Elementary/Middle: 14 Some High School: 11 Diploma/GED: 16 Trade/Vocational: 0 Some College: 19 Associates Degree: 6 Bachelors Degree: 2 Masters Degree+: 0</p> <p><u>Local Data</u> <u>Referral sources:</u> *DHS: 18 *PEC: 4 *Hospital: 19 *Substance abuse residential treatment: 39 *Other: 30</p> <p># of teen parents served: 19</p>	<p><u>Local Data</u> \$880 per child cost</p> <p>% of families receive a home visit: 100%</p> <p>Curriculum Tool: Nurturing Parenting Program</p>	<p><u>Local Data</u> % of children safely maintained in the home: 99%</p>
---	--	--	--	--	--

<p>Family Support Collaborative @ Horizons</p> <ul style="list-style-type: none"> Family Support & Parent Ed Prenatal–Age 3 Family Support & Parent Ed Prenatal–Age 5 <p>Family Support Workers provide in-home education and group support services to at-risk families with children prenatal to age 5. Modeled after Healthy Families America.</p>	<p>Priority # 4 Child and Family Support</p>	<p>Amount expended:</p> <ul style="list-style-type: none"> 0-3 yr \$: \$110,377.84 0-5 yr \$: \$73,585.22 <p><u>Staff:</u> Family Support Supervisor: .8 FTE</p> <p>3 Family Support Workers (1.0 FTE each)</p>	<p># of children (ages 0 – 5) participating in family support/parent education program (undup): 161</p> <p># of families participating in family support/parent education program (undup): data on 73 families (89 enrolled)</p> <p># of face-to-face visits completed: 1296</p> <p># of group parent education meetings offered: 17</p> <p><u>Ethnicity of head of household:</u> Native American or Alaskan Native: 2 Native Hawaiian/Pacific Islanders: 0 African American: 20 Multi-racial: 5 Hispanic Latino: 2 Asian: 0 White: 44 Other: 0</p> <p><u>Household size</u> 2 persons: 14 3 persons: 23 4 persons: 16 5 persons: 9 6 persons: 7 >6 persons: 4</p> <p><u>Annual family income</u> 0-\$10,000: 21</p>	<p># and % of children, prenatal-5 years old, screened for developmental delays: 16, 10%</p> <p># of children screened that were referred to Early Intervention services: 16</p> <p># and % of direct service staff with Bachelor’s level education or higher (health, human services, or education related field); 2, 66%</p> <p># and % of programs that have a national or state credential or have been accepted into the process: 1, 100%</p> <p><u>Local Data</u> \$1,142 per child cost</p> <p>% of families receive a home visit: 100%</p> <p>% of families with a Pre and Post Family Team Meeting: 67%</p> <p>Ave attendance rate at Parent Education/Support group meetings: 21%</p>	<p><u>Life Skills Progression</u> % of participating families that improve or maintain healthy family functioning, problem solving and communication: 37%*</p> <p>% of participating families that increase or maintain social supports: 27%*</p> <p>% of participating families that are connected to additional concrete supports: 47%*</p> <p>% of participating families that Increase knowledge about child development and parenting: 38%*</p> <p>% of participating families that improve nurturing and attachment between parent(s) and child(ren): 47%*</p> <p>*First year with new assessment tool. Program was flooded and was moved repeatedly during FY. Change in Program Director during FY. Empowerment Director met with program staff to improve accuracy of year end data for FY 10.</p> <p><u>Local Data</u> Of families with active DHS involvement for child abuse or neglect the % that did not have a new incidence of abuse/neglect this FY: 80%</p>
--	--	---	--	---	---

<p>Family Support Collaborative- cont</p>			<p>\$10,001-\$20,000: 32 \$20,001-\$30,000: 16 \$30,001-\$40,000: 3 \$40,001-\$50,000: 0 \$50,001-\$60,000: 1 Over \$60,000: 0</p> <p><u>Marital status</u> Married: 10 Partnered: 21 Single: 34 Divorced: 3 Widow: 1 Separated: 4</p> <p><u>Educational level of head of household</u> Elementary/Middle: 0 Some High School: 12 Diploma/GED: 31 Trade/Vocational: 6 Some College: 19 Associates Degree: 4 Bachelors Degree: 1 Masters Degree+: 0</p> <p><u>Local Data</u> <u>Referral sources:</u> *DHS: 53 *Community agencies: 21 *Other: 30</p>		
---	--	--	---	--	--

<p>Parent Education Consortium (PEC) @ Grant Wood AEA</p> <ul style="list-style-type: none"> Family Support & Parent Ed Prenatal–Age 5 <p>Six week group parent classes open to any interested parent with child under age 6.</p> <p>Two sessions are specialized: Second Step (DHS referrals) and Cooperative Parenting (divorced parents)</p> <p>Work-based trainings offered during lunch hour at major employers.</p>	<p>Priority # 4</p> <p>Child and Family Support</p>	<p>Amount expended: \$265,121.49 (0-5 yr \$)</p> <p><u>Staff:</u> PEC Coordinator (1.0FTE)</p> <p>Assistant Coordinator (.82 FTE)</p> <p>13 Group Education Facilitators-subcontracted</p> <p>30 Child Care Staff-subcontracted</p>	<p>#of children (ages 0–5) participating in family support/parent education program (undup): 575</p> <p># of families participating in family support/parent education program (undup): data on 378 families (415 enrolled)</p> <p># of face-to-face visits completed: 0</p> <p># of group parent education meetings offered: 252</p> <p><u>Ethnicity of head of household:</u></p> <table border="0"> <tr><td>Native American or Alaskan Native:</td><td>4</td></tr> <tr><td>Native Hawaiian/Pacific Islanders:</td><td>1</td></tr> <tr><td>African American:</td><td>24</td></tr> <tr><td>Multi-racial:</td><td>15</td></tr> <tr><td>Hispanic Latino:</td><td>8</td></tr> <tr><td>Asian:</td><td>13</td></tr> <tr><td>White:</td><td>333</td></tr> <tr><td>Other:</td><td>6</td></tr> </table> <p><u>Household size</u></p> <table border="0"> <tr><td>2 persons:</td><td>65</td></tr> <tr><td>3 persons:</td><td>136</td></tr> <tr><td>4 persons:</td><td>119</td></tr> <tr><td>5 persons:</td><td>40</td></tr> <tr><td>6 persons:</td><td>10</td></tr> <tr><td>>6 persons:</td><td>8</td></tr> </table> <p><u>Annual family income</u></p> <table border="0"> <tr><td>0-\$10,000:</td><td>96</td></tr> </table>	Native American or Alaskan Native:	4	Native Hawaiian/Pacific Islanders:	1	African American:	24	Multi-racial:	15	Hispanic Latino:	8	Asian:	13	White:	333	Other:	6	2 persons:	65	3 persons:	136	4 persons:	119	5 persons:	40	6 persons:	10	>6 persons:	8	0-\$10,000:	96	<p># and % of children, prenatal-5 years old, screened for developmental delays: 29, 5%</p> <p># of children screened that were referred to Early Intervention services: 29</p> <p># and % of direct service staff with Bachelor’s level education or higher (health, human services, or education related field): 13, 100%</p> <p># and % of programs that have a national or state credential or have been accepted into the process: 1, 100% (Accepted into Iowa Credential program but on waiting list)</p> <p><u>Local Data</u> \$701 per family cost</p> <p># of parenting groups held: 40</p> <ul style="list-style-type: none"> % at worksite: 22.5% % in rural area: 7.5% <p># of new people to meet PEC Facilitator requirements this FY: 2</p> <p><u>Class Quality Survey</u></p> <ul style="list-style-type: none"> 72% return rate 100% would recommend PEC to other families 	<p><u>Protective Factors Survey</u></p> <p>% of participating families that improve or maintain healthy family functioning, problem solving and communication: 84%</p> <p>% of participating families that increase or maintain social supports: 77%</p> <p>% of participating families that are connected to additional concrete supports: 77%</p> <p>% of participating families that Increase knowledge about child development and parenting: 81%</p> <p>% of participating families that improve nurturing and attachment between parent(s) and child(ren): 81%</p> <p><u>Local Outcome Data</u> 3-month Follow-Up Survey of Parents Return rate: 65%</p> <ul style="list-style-type: none"> % report Often using non-violent discipline methods: 92% report Often spending 1:1 time with child: 75%
Native American or Alaskan Native:	4																																		
Native Hawaiian/Pacific Islanders:	1																																		
African American:	24																																		
Multi-racial:	15																																		
Hispanic Latino:	8																																		
Asian:	13																																		
White:	333																																		
Other:	6																																		
2 persons:	65																																		
3 persons:	136																																		
4 persons:	119																																		
5 persons:	40																																		
6 persons:	10																																		
>6 persons:	8																																		
0-\$10,000:	96																																		

<p>PEC -continued</p>			<p>\$10,001-\$20,000: 42 \$20,001-\$30,000: 34 \$30,001-\$40,000: 25 \$40,001-\$50,000: 12 \$50,001-\$60,000: 44 Over \$60,000: 124</p> <p><u>Marital status</u> Married: 224 Partnered: 32 Single: 105 Divorced: 31 Widow: 3 Separated: 12</p> <p><u>Educational level of head of household</u> Elementary/Middle: 4 Some High School: 29 Diploma/GED: 65 Trade/Vocational: 21 Some College: 75 Associates Degree: 72 Bachelors Degree: 112 Masters Degree+: 33</p>		
-----------------------	--	--	---	--	--

<p>Teaching Interventions to Strengthen & Empower families (TIES) @ St. Luke's Hospital</p> <ul style="list-style-type: none"> Family Support & Parent Ed Prenatal–Age 5 <p>Research-based parent led early intervention program from Tennessee that addresses moderate – severe behavioral disorders in children.</p> <p>Seeking to become the 1st replication site in Iowa of the Tennessee Regional Intervention Project.</p>	<p>Priority # 4</p> <p>Child and Family Support</p>	<p>Amount expended: \$119,661.41 (0-5 \$)</p> <p><u>Staff:</u> TIES Coordinator-1.0 FTE</p> <p>Resource Consultant-.5 FTE</p> <p>Classroom Coordinator-.4 FTE</p>	<p># of children (ages 0 – 5) participating in family support/parent education program (undup): 68</p> <p># of families participating in family support/parent education program (undup): data on 20 families (42 enrolled)</p> <p>#of face-to-face visits completed: 541</p> <p># of group parent education meetings offered: 20</p> <p><u>Ethnicity of head of household:</u> Native American or Alaskan Native: 0 Native Hawaiian/Pacific Islanders: 0 African American: 0 Multi-racial: 0 Hispanic Latino: 0 Asian: 1 White: 19 Other: 0</p> <p><u>Household size</u> 2 persons: 1 3 persons: 5 4 persons: 8 5 persons: 5 6 persons: 1 >6 persons: 0</p> <p><u>Annual family income</u> 0-\$10,000: 1 \$10,001-\$20,000: 2</p>	<p># and % of children, prenatal-5 years old, screened for developmental delays: 0, 0%</p> <p># of children screened that were referred to Early Intervention services: 0</p> <p># and % of direct service staff with Bachelor's level education or higher (health, human services, or education related field): 3, 100%</p> <p># and % of programs that have a national or state credential or have been accepted into the process: 1, 100%. (RIP replication model site in process.)</p> <p><u>Local Data</u> \$1,760 per child cost</p> <p>% of eligible staff that completed required intensive RIP training in Tennessee: 100%</p> <p>% of families referred from outside of Cedar Rapids metro: 11%</p> <p>Ave family attendance rate in the program: 88%</p> <p># of families that successfully complete entire TIES program (treatment and payback): 3</p>	<p><u>Life Skills Progression</u></p> <p>% of participating families that improve or maintain healthy family functioning, problem solving and communication: 60%</p> <p>% of participating families that increase or maintain social supports: 100%</p> <p>% of participating families that are connected to additional concrete supports: 80%</p> <p>% of participating families that Increase knowledge about child development and parenting: 100%</p> <p>% of participating families that improve nurturing and attachment between parent(s) and child(ren): 100%</p> <p><u>Local Data</u></p> <p>% of families completing TIES that met their specified Treatment objectives: 100%</p> <p>% of children that demonstrate minimum 2-step increase in specified social skill behaviors: 100%</p>
---	---	--	---	---	--

<p>TIES -cont</p>			<p>\$20,001-\$30,000: 1 \$30,001-\$40,000: 2 \$40,001-\$50,000: 1 \$50,001-\$60,000: 13 Over \$60,000: 0</p> <p><u>Marital status</u> Married: 15 Partnered: 2 Single: 2 Divorced: 1 Widow: 0 Separated: 0</p> <p><u>Educational level of head of household</u> Elementary/Middle: 0 Some High School: 0 Diploma/GED: 1 Trade/Vocational: 0 Some College: 7 Associates Degree: 4 Bachelors Degree: 5 Masters Degree+: 3</p> <p><u>Local Data</u> Referral sources: *Self-Refer: 4 *Other: 51</p> <p># of children referred for specific services (e.g. CART, therapy): 12</p>		
-------------------	--	--	--	--	--

Preschool Programming Support For Low Income Families Performance Measures

Part A: Tuition and Transportation When completing this section, add the data together for all programs funded.

Preschool Programs Funded (Aggregated Data) <ul style="list-style-type: none"> • Central City • CR School District • Head Start • Linn Co. Child Dev • Linn Mar District 	Link to Which Comm. Plan Priority	How Much Was Invested? (Input Measures)	How Much Was Done or Produced? (Output Measures)	How Well Did We Do It? (Quality/ Efficiency Measures)	What Was the Change In Conditions for Those We Served? (Outcome Measures)
<p>1 Total # of preschool programs/ centers receiving preschool tuition or transportation support: 5</p> <p>2. # of funded Programs meeting the following standards:</p> <ul style="list-style-type: none"> ○ NAEYC Accreditation: 1 ○ NAFCC Accreditation: ○ Head Start Preschool Program Standards: 1 ○ QPPS Verification Process: 3 <p>3. Number of funded programs evidencing quality through:</p> <ul style="list-style-type: none"> ○ ECERS or FCCRS average score of 5: 0 ○ QRS rating of 3, 4, or 5: 0 	<p>Priority # 3</p> <p>Affordable High Quality Early Care and Education</p>	<p>1. Amount of funds expended on tuition: \$455,846.66</p> <p>2. Amount of funds expended on transportation: \$12,935.27 (@ Linn Mar)</p> <p>3. Amount of funds expended on other (Refer to Tool CC(B): \$0</p> <p>4. Highest Educational Level of Lead Teacher(s) (Total # of each):</p> <ul style="list-style-type: none"> ○ GED: 0 ○ High School Diploma: 0 ○ CDA: 1 ○ AA Degree in EC or child development: 0 ○ AA Degree related field: 0 ○ BA/BS in EC or child development: 16 ○ BA/BS in related field: 1 ○ Post Graduate Degree: 2 	<p>1. Total #of children who received scholarships (Undup): 131</p> <p>2. Number of children by age (Undup):</p> <ul style="list-style-type: none"> ○ 3 Year Olds: 56 (43%) ○ 4 Year Olds: 70 (53%) ○ 5 Year Olds: 5 (4%) <p>3. # of children by Race/ Ethnicity (Undup)</p> <ul style="list-style-type: none"> ○ Native American or Alaskan Native: 0 ○ African American: 26 ○ Hispanic or Latino: 11 ○ White: 76 ○ Native Hawaiian/ Pacific Islander: 0 ○ Multi-racial: 12 ○ Asian: 1 ○ Other: 5 <p>4. # of children who received transportation: 5</p>	<p>1. # and % of children whose families are at or below 200% poverty level: 131, 100%</p> <p>2. # and % of children referred to AEA for possible special ed determination: 29, 22%</p> <p style="text-align: center;"><u>Local Data</u></p> <p>Average Attendance rate in slots funded by Empowerment:</p> <ul style="list-style-type: none"> • Central City: 95% • CR School: 92% • Head Start: 82% • Linn Co.CDC: 89% • Linn Mar: 93% <p>\$3,578 per child cost</p>	<p>1. <u>Of the children with a Pre and Post assessment</u> the # and % of children demonstrating age appropriate skills: 107/124, 86%</p> <p>2. The assessment tool(s) used to determine the children's development:</p> <ul style="list-style-type: none"> • Creative Curriculum Development Continuum • Brigrance <p style="text-align: center;"><u>Local Data</u></p> <p>Percent of children enrolled in Empowerment slots without prior Preschool Experience:</p> <ul style="list-style-type: none"> • Central City: 100% • CR School: 69% • Head Start: 33% • Linn Co.CDC: 84% • Linn Mar: 80%

Preschool Programs Funded (Aggregated Data) <ul style="list-style-type: none"> • Central City • CR School District • Head Start • Linn Co. Child Dev • Linn Mar District 	Link to Which Comm. Plan Priority	How Much Was Invested? (Input Measures)	How Much Was Done or Produced? (Output Measures)	How Well Did We Do It? (Quality/ Efficiency Measures)	What Was the Change In Conditions for Those We Served? (Outcome Measures)
<p>4. # of funded programs by category (mark all that apply):</p> <ul style="list-style-type: none"> ○ School district-operated programs: 3 ○ Private, for-profit programs: 0 ○ Not-for-profit programs: 1 ○ Shared Visions programs: 0 ○ Head Start programs: 1 ○ Faith-based programs: 0 <p>5. Total # of Statewide Voluntary Preschool Programs for Four-Year-Old Children school districts & their partners that receive funding from this category: 3</p> <ul style="list-style-type: none"> -Central City -CR School -Linn Co. Child Development Ctr 		<p>5. Total # of lead teacher(s) who hold a valid practitioner's license issued by the Board of Educational Examiners (BOEE) and hold an endorsement from the BOEE that includes preschool or kindergarten: 15</p> <p>6. Curriculum (curricula) used by funded programs Creative Curriculum used by all programs</p>			

Part B: Preschool Other

<p>Programs Funded with Part B Preschool Support: None in Linn County</p>	<p>Link to Which Comm. Plan Priority or Priorities</p>	<p>How Much Was Invested? (Input Measures)</p>	<p>How Much Was Done or Produced? (Output Measures)</p>	<p>How Well Did We Do It? (Quality/Efficiency Measures)</p>	<p>What Was the Change In Conditions for Those We Served? (Outcome Measures)</p>
<p>For each preschool program reported to receive funding in this area (Part B only, not including transportation and tuition), provide the following:</p> <p>1. # of funded Programs meeting the following standards: NA</p> <ul style="list-style-type: none"> ○ NAEYC Accreditation: ○ NAFCC Accreditation: ○ Head Start Preschool Program Standards: ○ QPPS Verification Process: <p>2. Number of funded programs evidencing quality through:</p> <ul style="list-style-type: none"> ○ ECERS or FCCRS average score of 5 (with no subscale score under 2): ○ QRS rating of 3, 	<p>NA</p>	<p>Family Support and Parent Education – Follows Tool FF Expended amount: 0</p> <p>NA-We fund this with other \$.</p>	<p>#of children (ages 0 – 5) participating in family support/parent education program (undup): NA</p> <p># of families participating in family support/parent education program (unduplicated)</p> <p># of face-to-face visits completed</p> <p># of group parent education meetings offered</p> <p>Ethnicity of head of household Household size Annual family income Marital status Educational level of head of household</p>	<p>Number and percent of children, prenatal –5 years old, screened for developmental delays</p> <p>Number of those children screened that were referred to Early Intervention Services.</p> <p>Number and percent of direct service staff with Bachelor’s level education or higher (health, human services, or education related field)</p> <p>Number and percent of programs that have a national or state credential or have been accepted into the process</p>	<p>Percent of participating families that improve or maintain healthy family functioning, problem solving and communication</p> <p>Percent of participating families that increase or maintain social supports</p> <p>Percent of participating families that are connected to additional concrete supports</p> <p>Percent of participating families that Increase knowledge about child development and parenting</p> <p>Percent of participating families that improve nurturing and attachment between parent(s) and child(ren)</p>
		<p>Child Care Nurse Consultant (CCNC) expended amount: 0</p> <p>NA-We fund this with other \$.</p>	<p># of funded programs utilizing a Child Care Nurse Consultant:</p>		

Programs Funded with Part B Preschool Support: None in Linn County	Link to Which Comm. Plan Priority or Priorities	How Much Was Invested? (Input Measures)	How Much Was Done or Produced? (Output Measures)	How Well Did We Do It? (Quality/Efficiency Measures)	What Was the Change In Conditions for Those We Served? (Outcome Measures)
<p>4, or 5: 3. Number of funded programs by category: ○ School district-operated programs: ○ Private, for-profit programs: ○ Not-for-profit programs: ○ Shared Visions programs: ○ Head Start programs: ○ Faith-based programs:</p> <p>4. Report the total number of classrooms that are Statewide Voluntary Preschool Program for Four-Year-Old Children (include all locations i.e. child care center, private preschool, school district etc.) that received Community Empowerment funding in this category:</p>		Dental Services expended amount: 0 NA-We fund this with other \$.	# of children screened: # of children screened who were given treatment referrals: # of parents reporting this was child's first screening: # of centers participating in dental screening:		
		Mental Health Services expended amount: 0 NA-We fund this with other \$.	# of children who received treatment that were expelled: # of children observed: # of children identified for mental health services: # of children who received services and enter kindergarten on a behavior plan (optional): # of centers participating in mental health services		
		Preschool Coordinator expended amount (may include making progress on any of the quality standards/levels): 0	#of family applications processed: # of preschools that the coordinator assisted in increasing quality standards:		

Programs Funded with Part B Preschool Support: None in Linn County	Link to Which Comm. Plan Priority or Priorities	How Much Was Invested? (Input Measures)	How Much Was Done or Produced? (Output Measures)	How Well Did We Do It? (Quality/ Efficiency Measures)	What Was the Change In Conditions for Those We Served? (Outcome Measures)
		Professional Development expended amount: 0 NA- We fund this with other \$.	Total # of participants:	Of the total # of participants: # and % of Administrators/ Directors: # and % of Teachers/ Early Childhood Providers: # and % of Assistant Teachers:	% of those reporting they will incorporate learning into policy or practice: % of those reporting that information was valuable to their profession:
		Other Projects/Activities expended amount: 0			

Quality Improvement Funds Performance Measures

Quality Improvement Programs Funded & Description	Link to Which Comm. Plan Priority or Priorities	How Much Was Invested? (Input Measures)	How Much Was Done or Produced? (Output Measures)	How Well Did We Do It? (Quality/ Efficiency Measures)	What Was the Change in Conditions for Those We Served? (Outcome Measures)
<p>Training Scholarships</p> <p>Scholarships to assist parents and early care providers with access to child mental health or behavioral support training and to purchase relevant curriculum.</p>	<p>#2 Mental Health & Behavioral Supports</p>	<p>Amount Expended: \$16,991.85</p>	<p># of scholarships awarded: 14</p> <p># of conferences attended by the scholarship recipients: 13</p> <p># of curriculums purchased, by type, by the scholarship recipients: 2</p> <ul style="list-style-type: none"> • Teaching Strategies • Sand Play Therapy 	<p>Average training scholarship amount: \$1,214</p> <p>% of survey respondents Agree or Strongly Agree that they were satisfied with the quality and content of training or curriculum: 100%</p> <p>% of survey respondents Agree or Strongly Agree that they would recommend the training or curriculum to others early childhood care providers: 100%</p>	<p>% of survey respondents Agree or Strongly Agree that the training or curriculum increased their knowledge or skills in the area of mental health and behavioral supports: 100%</p> <p>% of survey respondents Agree or Strongly Agree that they would not have been able to attend training or purchase curriculum without Empowerment funding: 100%</p>
<p>Preschool Science Curriculum Conference</p> <p>In collaboration with the Cedar Rapids AEYC & local donors</p> <p>Financial support to secure a contract to bring Dr. Spangler science education training to Cedar Rapids.</p>	<p>Priority # 5 Community Where Children Are Valued</p>	<p>Amount Expended: \$1,830.00</p>	<p>Date that Dr. Spangler Science-based conference held in Cedar Rapids: August 2009</p> <p># of child care professionals attending the conference: 270</p>	<p># of private and public entities that provided funding for the conference: 5</p> <ul style="list-style-type: none"> • Rockwell Collins, Cedar Rapids AEYC, Greater Cedar Rapids Community Foundation, ISU Extension and Linn County Empowerment. • 99% rated information and materials as Excellent. 	<p>Survey Results from Participants</p> <ul style="list-style-type: none"> • % stated the training gave them a better understanding of how to use science-based curriculum: 97% • % reduction in conference registration fee charged to participants due to collaborative effort: 91% reduction, from \$179 per person to \$15 <p># of Science Kits were distributed to flood-affected child care programs: 60</p>

<p>five giant steps Initiative</p> <p>Community collaborative to promote alliances between early childhood programs and the community.</p>	<p>Priority # 5 Community Where Children Are Valued</p>	<p>Amount expended: \$55,827.00</p> <p><u>Staff:</u> Project Manager- 1.0 FTE</p>	<p># of quarterly stakeholder meetings held: 4</p> <p># of grants written to obtain funding for early childhood services: 1</p> <p># of community presentations provided on importance of early childhood: 11</p> <p># of Reach Out & Read Iowa literacy events coordinated: 1</p> <p># of public-private partnership projects initiated by five giant steps: 3</p> <ul style="list-style-type: none"> • Virtual Community (parent website) with Gazette newspaper • Early Learning Insitute with multiple partners • First Years First grant application 	<p># of participants at stakeholder meetings: 85</p> <p>% of grants that were funded: 0%</p> <p># of community partners signed Letters of Intent to be a part of the Community Early Learning Institute (a major project of five giant steps): 7</p>	<p>Flood Recovery Support Efforts</p> <p># of post-flood reports prepared and widely read on the impact of the flood on child care providers: 2</p> <ul style="list-style-type: none"> • <i>The Effects of the June 2008 Flood</i> • <i>Flood of 2008-Not "So Over"</i> <p># of flood impacted child care providers adopted by local businesses thru efforts of <i>five giant steps</i>: 4</p> <p># of <i>Kids Helping Kids in the Flood</i> books distributed thru Reach Out & Read event: 400 books</p>
<p>Empowerment Coordinator</p> <p>Full time staff to support Board accountability efforts, maintain communication with State Team, and to facilitate community early childhood collaboratives.</p>	<p>Priority # 5 Community Where Children Are Valued</p>	<p>Amount expended: \$32,147.01</p> <p><u>Staff:</u> Empowerment Coordinator – 1.0 FTE thru Feb. 2009 only</p>	<p># of early childhood conferences/ trainings attended: 1</p> <p># of Empowerment programs directly administered by Coordinator: 1 (MH Scholarships)</p> <p># of legislative events and advocacy activities coordinated: 1- Day on</p>	<p># of community collaborative groups coordinated or served on as a member: 2</p> <p># of new Empowerment Committees implemented this FY: 1 for the 10-Year event</p> <p>% of Required Empowerment forms submitted to the State</p>	<p>% attendance rate of Linn County legislators at Day on the Hill luncheon coordinated by Empowerment staff: 91%</p> <p>Redesignation status of the Linn County Community Empowerment Board: 3-year Un-Conditional</p>

			<p>the Hill luncheon</p> <p>Assisted with Re-Designation Site Visit: Sept 2008</p> <p># of program progress report forms re-designed & improved: 27</p>	<p>office by the Deadline: 100%</p> <p>% of Empowerment programs with updated Progress Reports: 100%</p>	
<p>Iowa Quality Preschool Programs Support</p> <p>Financial support to school districts awarded State Wide Voluntary Preschool Program grant to assist them in meeting IQPPS standards</p>	<p>Priority # 3</p> <p>Affordable High Quality Early Care and Education</p>	<p>Amount Expended: \$1,702.07 total</p> <ul style="list-style-type: none"> • Cedar Rapids: \$864.72 • Center Point: \$837.35 	<p># of school districts that were awarded IQPPS grants: 2</p> <ul style="list-style-type: none"> • Center Point-Urbana • Cedar Rapids <p>Items purchased with IQPPS grant:</p> <ul style="list-style-type: none"> • Laptops • Software • Child Development Associate (CDA) Training Videos • CDA seminar Instructor Guide 	<p>Average \$ amount of IQPPS grant: \$851</p>	<p>% of 4-year olds enrolled in Center Point-Urbana classrooms that benefited from Technology materials purchased with IQPPS grant: 100%</p> <p># of Cedar Rapids School Staff that are working toward their Child Development Associate certification with materials purchased with IQPPS grant: 40</p>

Other Services (other than targeted School Ready funds) Performance Measures

For each service listed, in the first column, please provide a brief description of the program being supported.

OTHER School Ready Services Provided & Description	Link to Which Comm. Plan Priority or Priorities	How Much Was Invested? (Input Measures)	How Much Was Done or Produced? (Output Measures)	How Well Did We Do It? (Quality/ Efficiency Measures)	What Was the Change in Conditions for Those We Served? (Outcome Measures)
<p>Family & Community Health Alliance</p> <p>Comprehensive child health services including hearing, vision, developmental, dental, nutrition, and social assessments and assistance with insurance enrollment.</p>	<p>Priority # 1</p> <p>Preventive Health</p>	<p>Amount expended: \$345,947.00</p> <p><u>Staff:</u> Clinic Coordinator, RN 0.44 FTE</p> <p>Hawk-I Specialist, BSW 0.72 FTE</p> <p>Child Care Nurse Consultant, RN 0.5 FTE</p> <p>Dental Care Coordinator 1.0 FTE</p> <p>VNA Clinical Nurse, RN 0.8 FTE</p> <p>GWAEA Child Support Specialist 0.9 FTE</p>	<p>Well Child Clinic</p> <p># of Well Child Clinic Visits: 1563</p> <p># of children served at clinic (Undup): 1563</p> <p># & % of children referred for other health care services: 200 or 13%</p> <p># of community outreach screenings held: 413</p> <p># of developmental screenings completed: 920</p> <p># of referrals to: -Early ACCESS: 9 -Grant Wood AEA: 29</p> <p># of blood lead screens completed: -Well Child Check: 515 -WIC visits: 2495</p> <p># of children immunized: 4* *# of immunizations will decline as families find medical homes</p>	<p>\$221 per child cost</p> <p>% of children screened that are referred to: Early ACCESS: .97% Grant Wood AEA: 3%</p> <p>% of children with elevated blood lead level: .5%</p>	<p>% of children referred to Early ACCESS and or Grant Wood AEA that receive service coordination:</p> <ul style="list-style-type: none"> o Early Access: 33% o Grant Wood AEA: 28% <p>% of children with confirmed elevated blood lead levels that were located and then received follow-up nutrition counseling on lead mitigation diet: 86%</p> <p>% of children, age 0-2, that were up to date on their immunization before and then after received Well Child Clinic services: 0% before 100% after</p> <p>% of parent survey respondents state the Activity Kit increased their awareness of child developmental activities: 98%</p>

<p>FCHA- continued</p>		<p>GWAEA Child Support Specialist 0.6 FTE</p> <p>GWAEA Screener 0.25 FTE</p> <p>2 St. Luke's Dental Hygienists, RDH 0.5 FTE</p> <p><u>Sites:</u></p> <ul style="list-style-type: none"> • Urban • Linn Co. Public Heath • Taylor • Marion • Inn-Circle • Head Start • Child Care programs 	<p># of Activity Kits distributed: 566</p> <p><u>Dental</u></p> <p># of children receive-</p> <ul style="list-style-type: none"> • dental screens: 4239 • flouride varnish: 3203 • referral to dentist: 1766 <p># of children with urgent dental needs: 14</p> <p># of dental vouchers for follow-up dental treatment: 106</p> <p><u>hawk-I Outreach</u></p> <p># of community outreach activities: 16</p> <p># of people present at community outreach activities: 10,796</p> <p><u>Nutrition Education</u></p> <p># of children referred to the Nutrition/ Obesity Support Activities Dietitian: 43</p> <p># of families enrolled in nutrition education classes: 10</p>	<p># of parents completed survey on effectiveness of Activity Kits: 213</p> <p># of children in Linn County enrolled in hawk-I by June 30, 2009: 1260</p> <p># of children in Linn County enrolled in Title XIX by June 30, 2009: 13,659</p> <p>% of referred children confirmed as overweight or at risk: 100%</p> <p>% of families that completed nutrition education classes: 0%</p> <p>% of nutrition class participants report satisfaction with program content: = 100%</p>	<p># and & of dental referrals that are completed: 777, 44%</p> <p># and % of urgent dental needs that are completed: 11, 79%</p> <p><u>Family & Community Health Alliance Goal:</u> 65% of children on Medicaid that receive a dental service</p> <ul style="list-style-type: none"> • <u>FY 09 data:</u> % of children on Medicaid that receive a dental service: 57% <p>% increase this FY in # of Linn County children enrolled in hawk-I or Title XIX: 6.5%</p> <p>% of nutrition class participants report increased knowledge on healthy lifestyle: No data. Sample size too small. Program was discontinued on 3/31/09.</p>
------------------------	--	--	--	---	--

<p>FCHA- continued</p>			<p><u>Child Support Specialists</u> #of Hands Together Workshops held for rural child care providers: 2 # of Magic Book Bag Programs held at rural Linn Co libraries: 8 Other Community Outreach events: 2 -Linn County Child Care Parent Group -Kirkwood Community College Early Childhood Curriculum Class</p> <p><u>Child Care Nurse Consultant</u> Hire date of new consultant: 12/29/08 # of on-site technical assistance visits to care providers: 166 # of QRS assessments completed: 12</p>	<p># of child care providers participate in Hands Together Workshops: 69 # of children & adults participating in Magic Book Bag events with their parents: 209 children & 115 adults # of parents and children at the Other Community Outreach Events: 25 adults 0 children Date CCNC training completed: 4/24/09 % of TA visits that are lowa QRS related: 27% # of providers not meeting DHS standards at initial CCNC visit: 8</p>	<p>% of Hands Together Workshop survey respondents (child care providers) report improved knowledge/skill on appropriate child development activities: 100% % of Magic Book Bag survey respondents (parents) who report improved knowledge/skill on appropriate child development activities: 100% # and % of parents that report increased interaction with their child as a result of the outreach activities: 100% % of child care providers showing improvement on QRS assessment tool: 92% % of providers that are DHS compliant after working with CCNC: 38% (rest are in process)</p>
<p>Cedar Rapids School District Preschool Transportation Free transportation to children enrolled in school based preschool whose</p>	<p>Priority # 3 Affordable High Quality Early Care and Education</p>	<p>Amount expended: \$25,670.12</p>	<p>Ave # of children transported each month: 68</p>	<p># of children able to consistently attend school-based preschool because of Empowerment transportation: 95 total \$270 per child costs</p>	<p>17% of families indicated that regular attendance at preschool benefited their child's academic skills 40% of families indicated that regular attendance at preschool allowed their child to grow socially and in self help skills</p>

<p>Every Child Reads (3-5yr) In Collaboration with Grant Wood Area Education Agency</p> <p>24 hours of pre-literacy training to child care providers</p>	<p>Priority # 3 Affordable High Quality Early Care and Education</p>	<p>Amount Expended: \$2,837.97</p> <p>Staff: 1contracted Facilitator</p>	<p># of Every Child Reads (ECR) sessions held: 8</p> <p># of Centers that participated in ECR training: 4</p> <p>Names of Centers that participated:</p> <ul style="list-style-type: none"> • <i>Hiawatha Day school</i> • <i>Waypoint Uptown</i> • <i>Kirkwood Kids</i> • <i>Isaac Newton Academy</i> 	<p># of Participants that completed the ECR coursework by type: 10 2- teacher renewal 8- non credit</p> <p>\$284 per participant cost</p> <p># of children's books distributed to ECR participating centers this FY: 520</p>	<p>% of participants that report incorporating learning into policy or practice: 100%</p> <p>% increase in the # of books available to children in centers participating in Every Child Reads: 10%</p>
<p>Environmental Rating Scale Training in Collaboration with ISU Extension</p> <p>Training on childcare environmental assessment tools in support of the Iowa Quality Rating System</p>	<p>Priority # 3 Affordable High Quality Early Care and Education</p>	<p>Amount expended: \$3,384.71</p> <p>Staff: 2 contracted facilitators</p>	<p>Total # of participants: 27</p> <p>By type: 15 Directors 12 Teachers/Providers</p> <p># of additional ERS trainings held: 2</p> <ul style="list-style-type: none"> • 1 ITERS • 1 ECERS 	<p>% of all participants completing coursework: 74%</p> <p>Completion By type: 87% of Directors 50% of Teachers</p> <p>\$125 per participant cost</p>	<p>% of participants who report incorporating learning into policy or practice: 100%</p>
<p>Center Point-Urbana School District Pointer Pup Preschool</p> <p>Free School-based part-day preschool slots for 3-year olds from income eligible families (<200%)</p>	<p>Priority # 3 Affordable High Quality Early Care and Education</p>	<p>Amount expended: \$34,803.65</p> <p>Staff: Two Preschool Teachers .5 FTE each Paraeducator .5 FTE</p>	<p># of free high quality preschool slots for 3 year olds: 5</p> <p># of children on waiting list: 0</p> <p># of home visits completed: 5</p> <p># of Dental screening events held: 1</p> <p># of Grant Wood AEA screening events held: 1</p>	<p>High Quality Standard achieved: Iowa Quality Preschool Program Standards</p> <p>\$6,961 per slot cost</p> <p>Ave Attendance rate: 93%</p> <p>% of lead teachers with Bachelors, or Above, in early childhood: 100%</p> <p>% of families that receive home visit: 100%</p>	<p>% of children enrolled in Empowerment slots without prior preschool experience: 60%</p> <p>% of children demonstrate age appropriate skills at POST Assessment: 80%</p>

			<p>Curriculum used: OWLS (Opening a World of Learning)</p> <p>Assessment used: Work Sampling</p> <p># of children with both a Pre and Post Assessment: 5</p>	<p>% of children participated in Dental screening event: 98%</p> <p>% of children participated in AEA screening event: 80%</p> <p>Percent of children with both a Pre and Post Assessment: 100%</p>	
<p>College Community School District Early Childhood Center</p> <p>Free school-based Full-day preschool slots for 3-5 year old children from income eligible families (<200%)</p>	<p>Priority # 3 Affordable High Quality Early Care and Education</p>	<p>Amount expended: \$58,205.42</p> <p><u>Staff:</u> Lead Preschool Teacher 1.0 FTE Assistant Teacher 1.0 FTE</p>	<p># of free high quality preschool slots for 3-5 yr olds: 8</p> <p># of children on waiting list: 2</p> <p># of home visits completed: 28</p> <p># of Dental screening events held: 0</p> <p># of Grant Wood AEA screening events held: 2</p> <p>Curriculum used: Creative Curriculum</p> <p>Assessment used: Creative Curriculum Ages and Stages</p> <p># of children with both a Pre and Post Assessment: 7</p>	<p>High Quality Standard achieved: Iowa Quality Preschool Standards</p> <p>\$7,276 per full day slot</p> <p>Ave Attendance rate: 85%</p> <p>% of lead teachers with Bachelors, or Above, in early childhood: 50%</p> <p>% of families that receive home visit: 63%</p> <p>% of children participated in Dental screening event: 0%</p> <p>% of children participated in AEA screening event: 72%</p> <p>Percent of children with both a Pre and Post Assessment: 87%</p>	<p>% of children enrolled in Empowerment slots without prior preschool experience: 75%</p> <p>% of children demonstrate age appropriate skills at Post Assessment: 75%</p>

<p>Early Head Start Wraparound @ Inn Circle Transitional Housing, HACAP</p> <p>Infant Care: Early Head Start provides 3-4 hours/day of preschool services. Empowerment “wraps around” the core EHS program to extend hours/day of care</p>	<p>Priority # 3 Affordable High Quality Early Care and Education</p>	<p>Amount expended: \$35,772.00</p> <p>Staff: Lead Infant Worker II 1.0 FTE</p>	<p># of full-day full year infant Early Head Start wraparound slots: 8</p> <p># of families served: 8</p> <p># of families referred to community resource or social services: 8</p> <p># of Training sessions for families on skill development activities for children: 16</p> <p># of Home Visits completed: 87</p> <p>Curriculum used: Infant & Toddlers Creative Curriculum</p> <p>Assessment Tool: Creative Curriculum</p>	<p>% of slots at Inn Circle that are full-day full year due to Empowerment \$: 100%</p> <p># on waiting list for infant care: 16</p> <p>\$4,472 per infant slot</p> <p>% of families that received the service to which they were referred or their need was met: 100%</p> <p>% of families that attend Training sessions: 88%</p> <p>% of families receive a Home Visit: 100%</p> <p>Average attendance rate: 77%</p> <p>% of lead teachers with Bachelors, or Above, in early childhood: 100%</p>	<p>% of infants demonstrate skill growth on Post Assessment: 100%</p>
---	--	--	--	---	--